

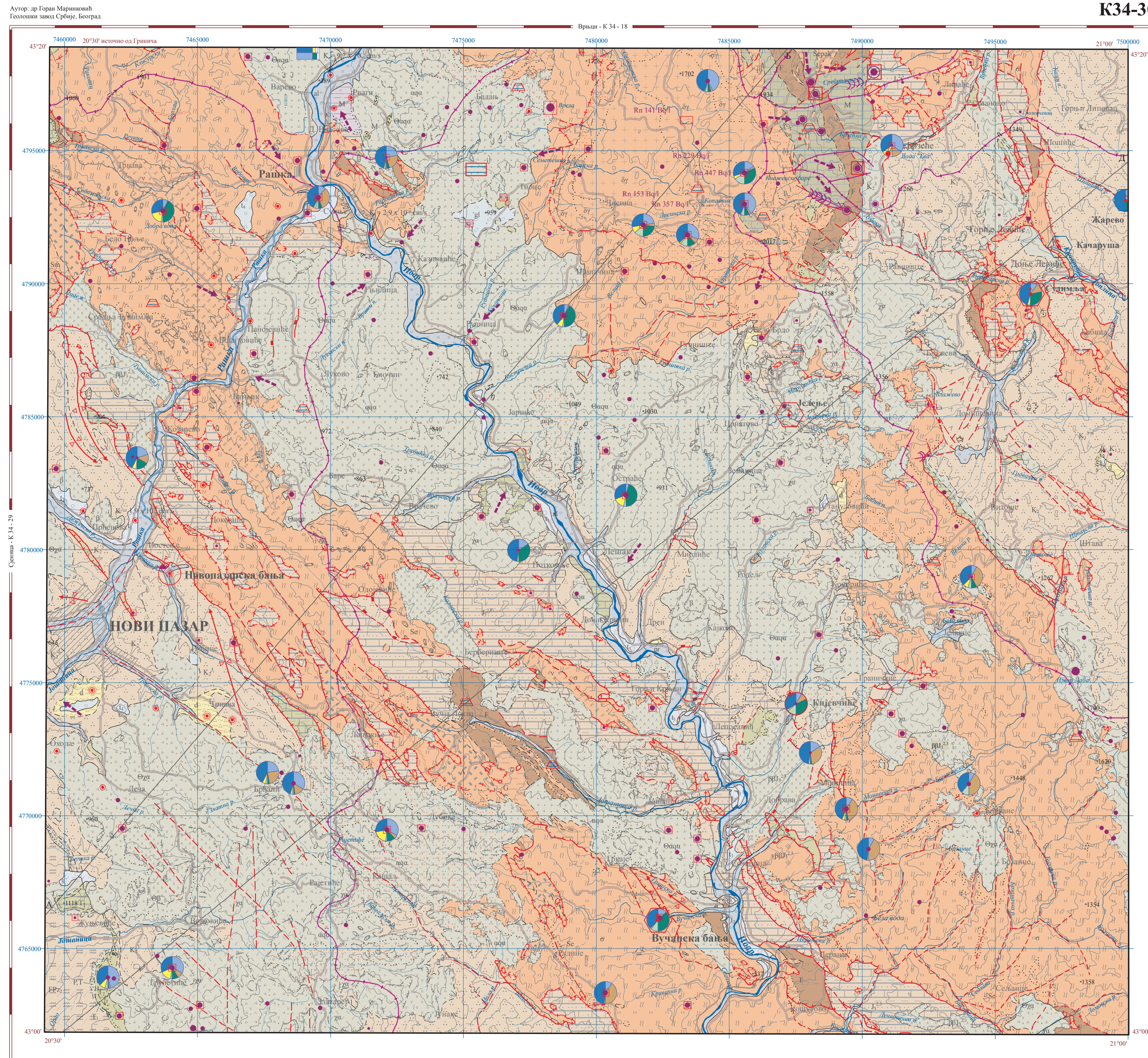
ЛЕГЕНДА

ХИДРОГЕОЛОШКИХ КАТЕГОРИЈА СТЕНА И КЛАСА ИЗДАЈИ

Legend table with columns: Hydrogeological category of the rock, Lithological composition and stratigraphic affiliation, Hydrogeological properties, and Symbols. It details various rock types like igneous, metamorphic, and sedimentary, along with their hydrogeological characteristics and symbols used on the map.

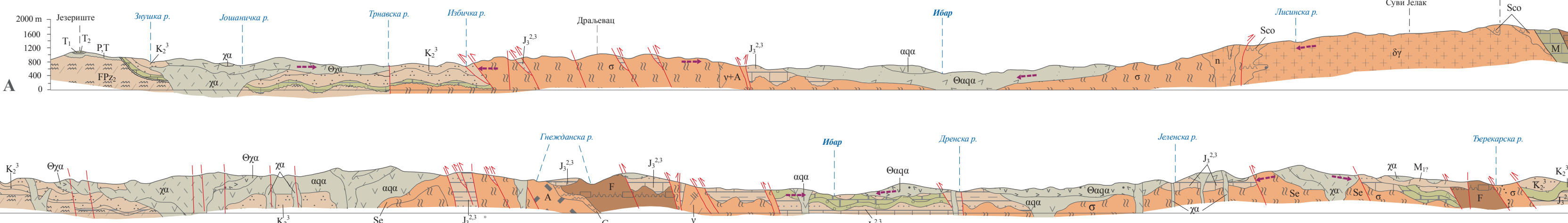
Стандардне геолошке ознаке

- List of standard geological symbols including: Stratigraphic affiliation, Fault lines (normal, covered, etc.), Erosion boundaries, Volcanic boundaries, Disjunctive contacts, Gradational boundaries, and Geomorphological features like springs and depressions.

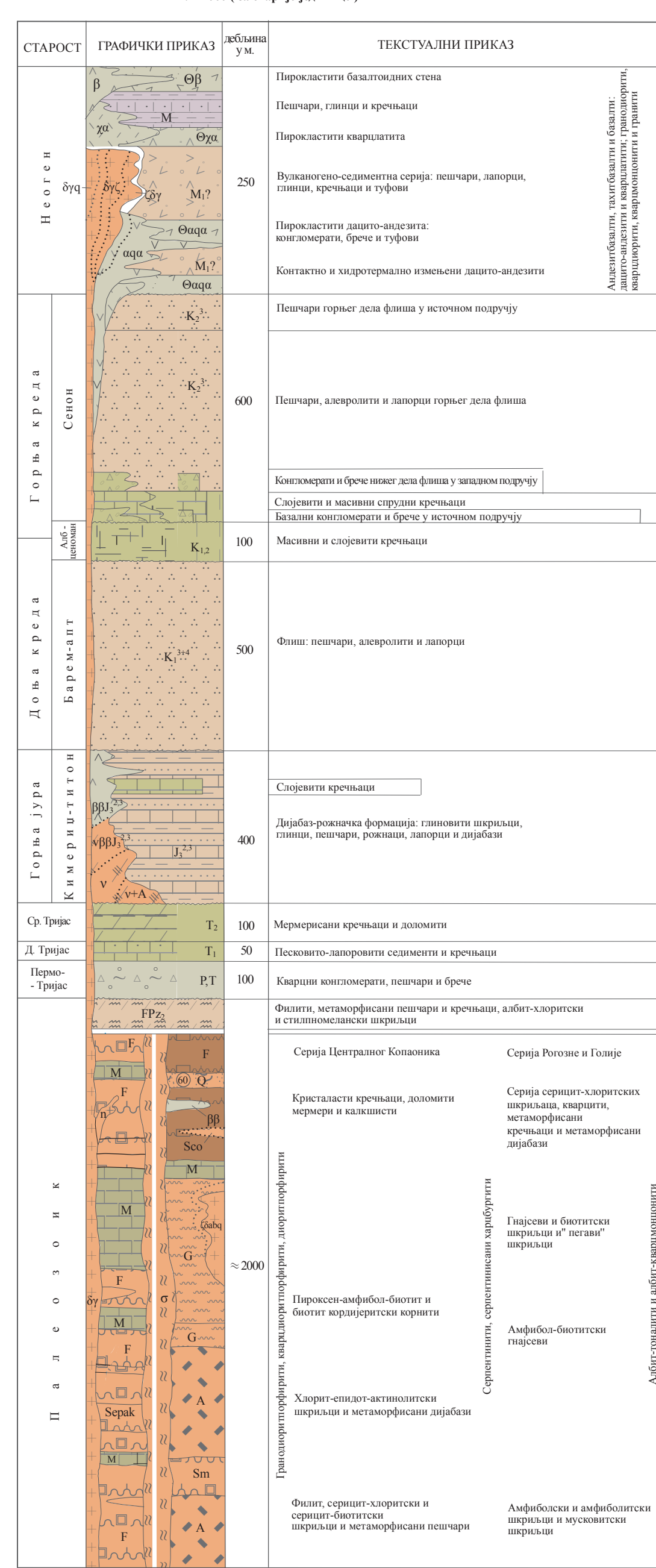


Геолошка основа: Завод за геолошка и геофизичка истраживања Београд 1958-1969. год. Колевска Митровица - К 34 - 42

ХИДРОГЕОЛОШКИ ПРОФИЛИ



ХИДРОГЕОЛОШКИ СТУБ



ПОЛОЖАЈ ЛИСТА НОВИ ПАЗАР



РАСПОРЕД ЛИСТОВА 1: 100 000



Термална и минерална својства подземних вода

- Legend for thermal and mineral water symbols: heated water (<math>5^{\circ}\text{C}</math>), hot water (<math>20-38^{\circ}\text{C}</math>), very hot water (><math>38^{\circ}\text{C}</math>), radon water, and radon concentration (><math>100\text{ Bq/l}</math>).

Хидрографија

- Legend for hydrography symbols: main river, minor river, intermittent river, and water table.

Хемијска својства вода

- Legend for chemical water properties symbols: shallow groundwater, deep groundwater, surface water, and chemical composition indicators (Ca, Mg, Na-K, Cl, SO<sub>4</sub>, HCO<sub>3</sub>).

Водне грађевине

- Legend for water engineering symbols: well, artesian well, borehole, dam, and other water structures.

Водне појаве

- Legend for water phenomena symbols: spring, artesian spring, and other water features.

Метеоролошке станице

- Legend for meteorological stations symbols: climatological station and pluviometer station.

Остале ознаке

- Legend for other symbols: road network, railway line, urban area, and contour lines.